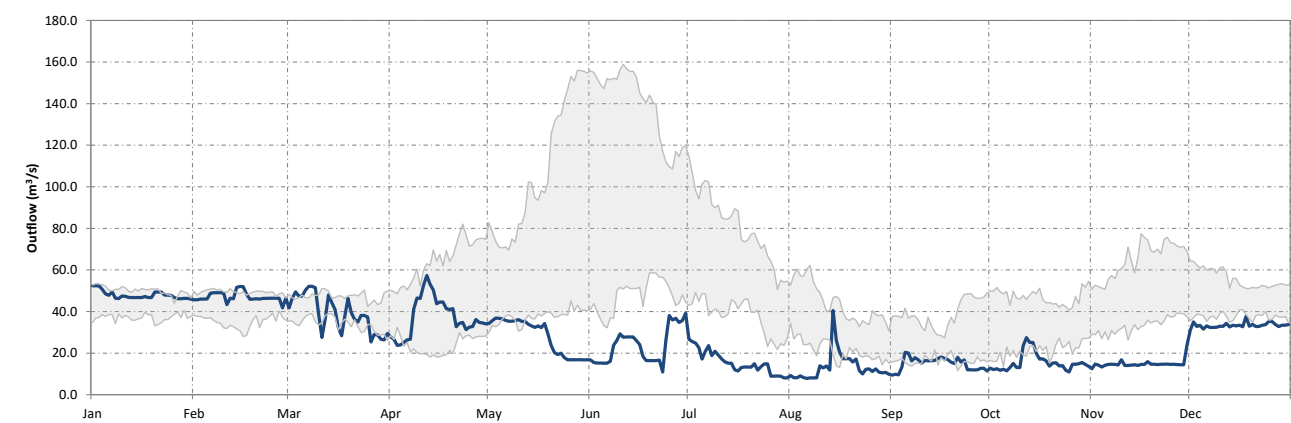
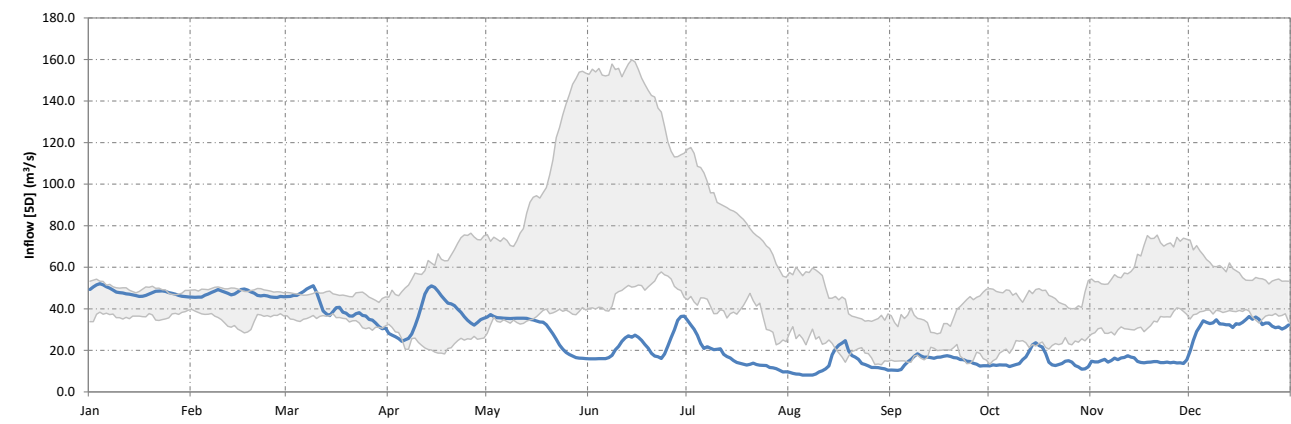
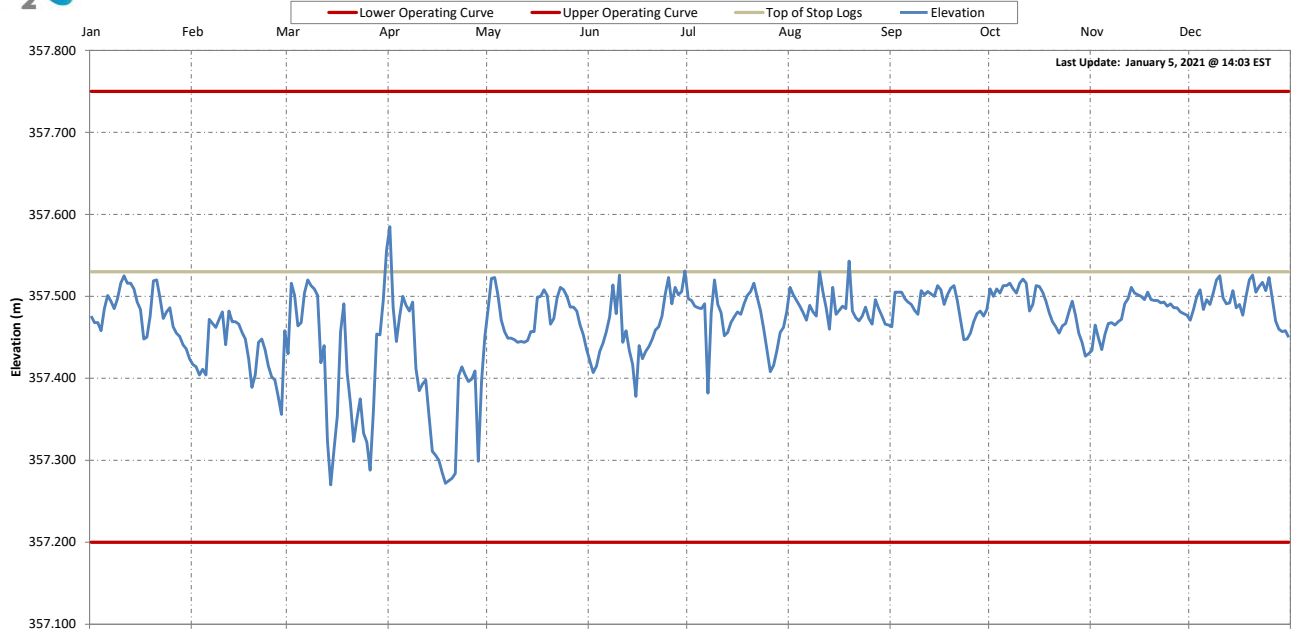
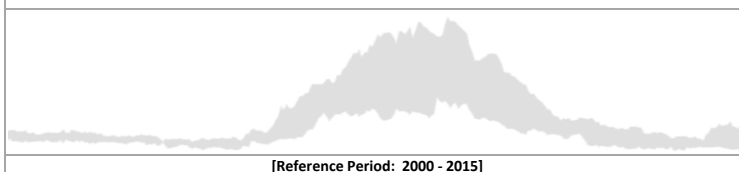




### Sturgeon Falls Generating Station



#### 25<sup>th</sup> to 75<sup>th</sup> Percentile Data



[Reference Period: 2000 - 2015]

Date	Elevation (m)	Inflow [5D] (m <sup>3</sup> /s)	Outflow [1D] (m <sup>3</sup> /s)
25-Dec-20	357.523	33.1	35.3
26-Dec-20	357.497	31.6	35.2
27-Dec-20	357.470	30.9	33.7
28-Dec-20	357.460	31.2	32.8
29-Dec-20	357.457	30.3	33.4
30-Dec-20	357.458	31.0	33.4
31-Dec-20	357.450	32.3	33.7

Provisional Data