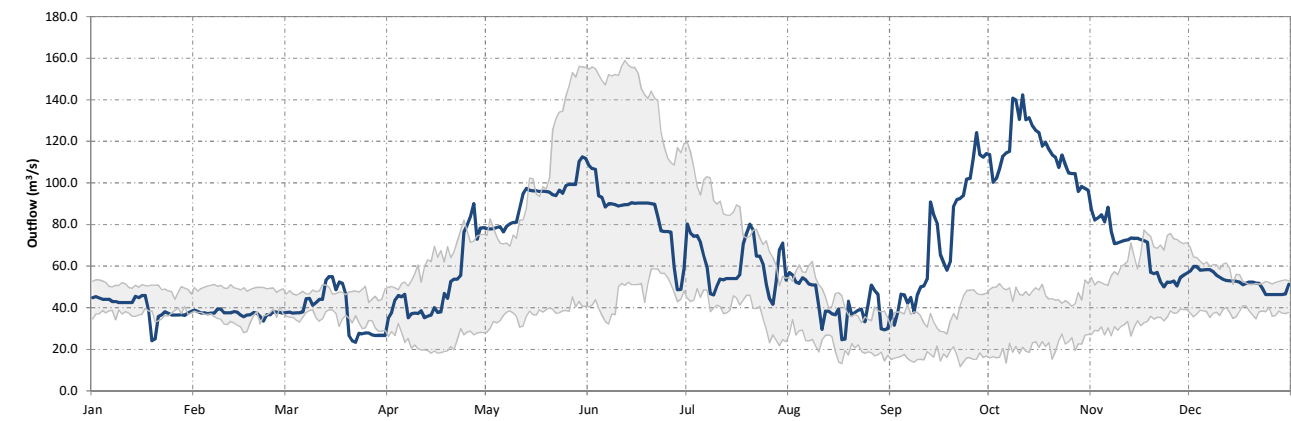
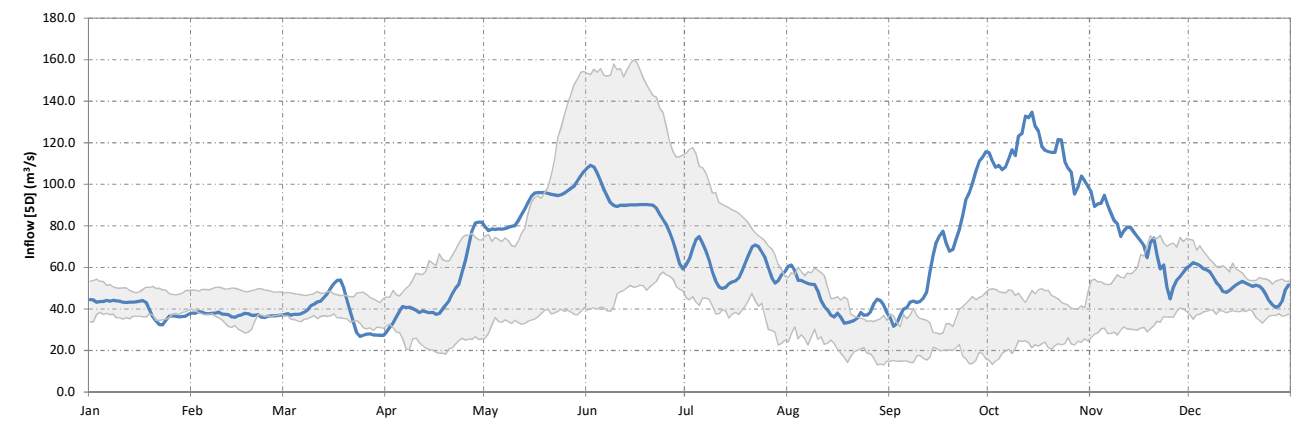
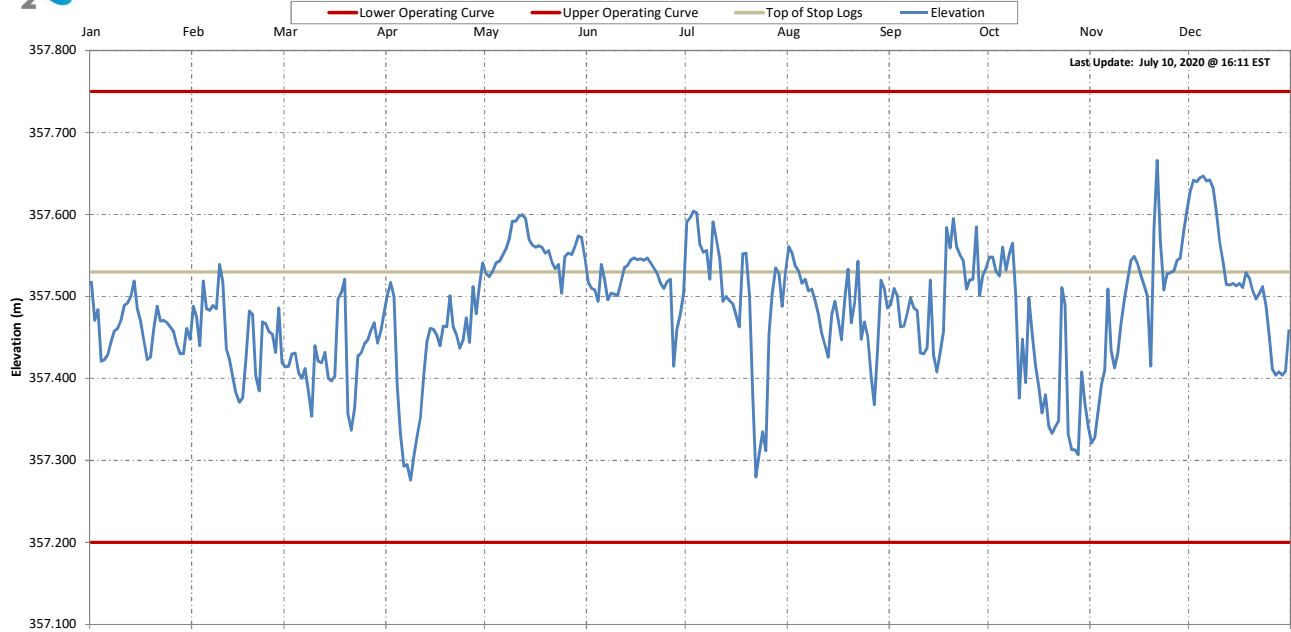
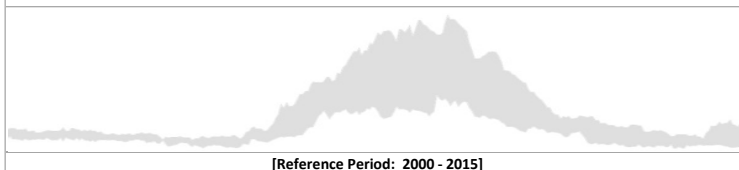




### Sturgeon Falls Generating Station 2019



#### 25<sup>th</sup> to 75<sup>th</sup> Percentile Data



Date	Elevation (m)	Inflow [5D] (m <sup>3</sup> /s)	Outflow [1D] (m <sup>3</sup> /s)
25-Dec-19	357.453	44.1	46.3
26-Dec-19	357.411	42.1	46.3
27-Dec-19	357.404	40.8	46.3
28-Dec-19	357.408	41.3	46.3
29-Dec-19	357.404	43.8	46.3
30-Dec-19	357.409	49.3	46.5
31-Dec-19	357.460	51.6	51.2

**Provisional Data**