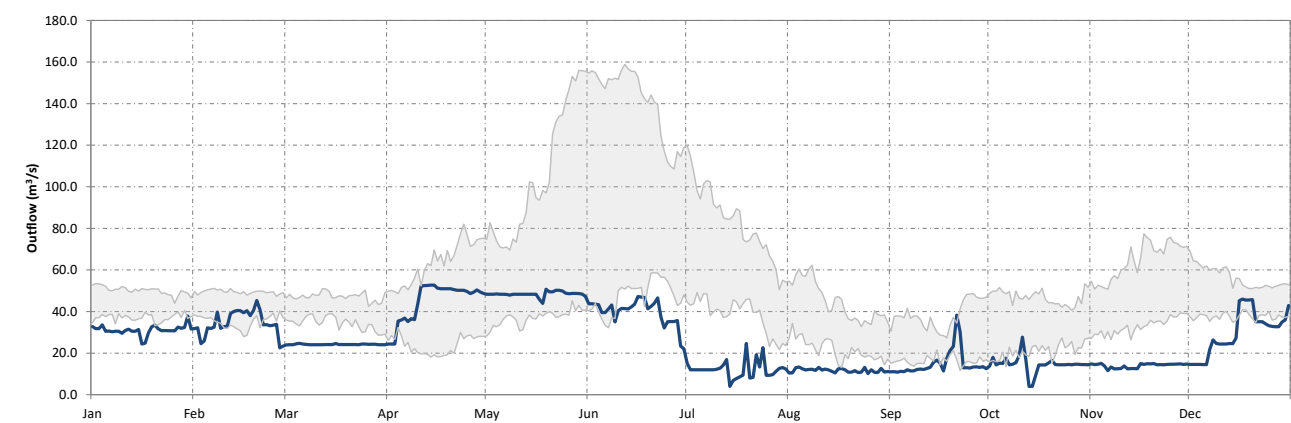
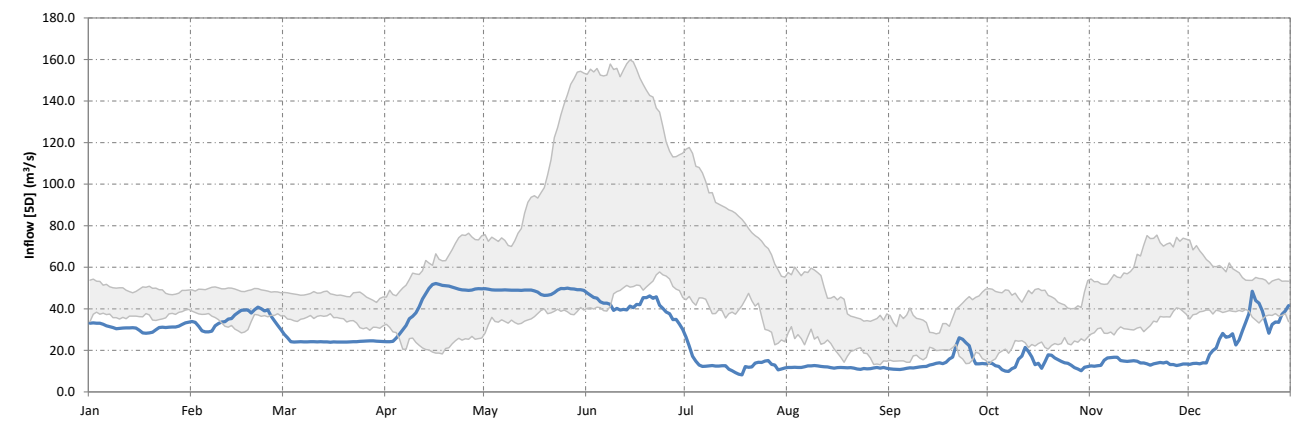
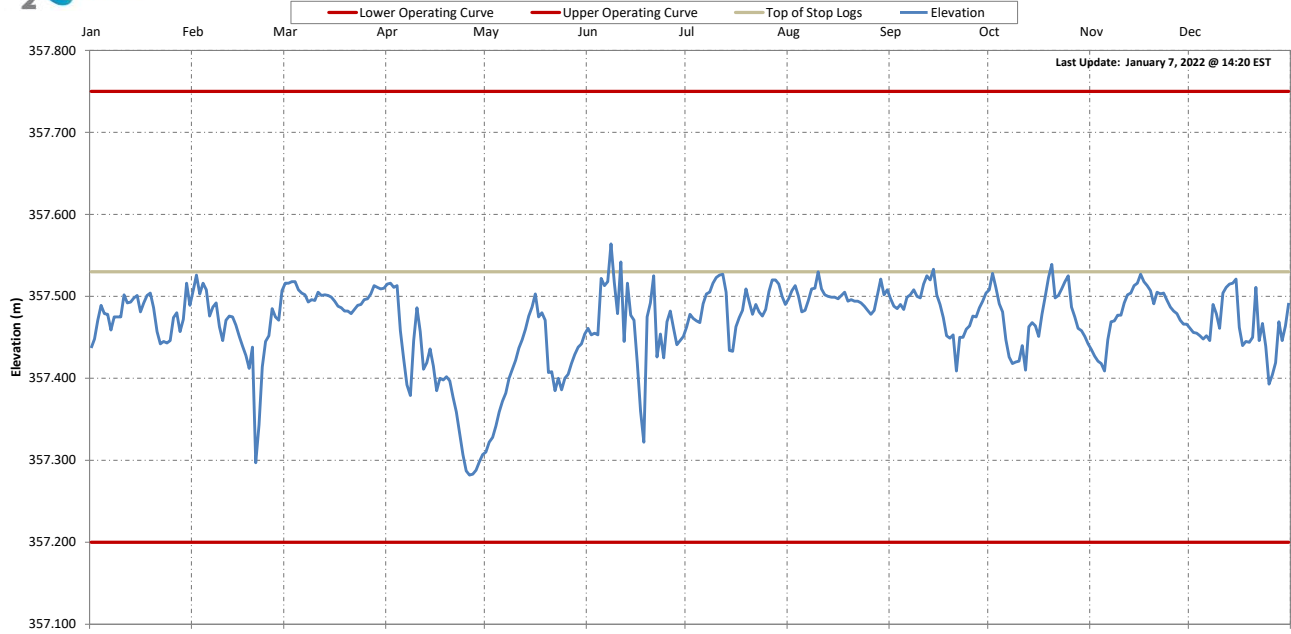
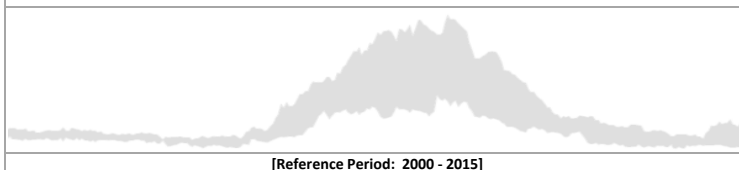




Sturgeon Falls Generating Station



25th to 75th Percentile Data



[Reference Period: 2000 - 2015]

Date	Elevation (m)	Inflow [5D] (m ³ /s)	Outflow [1D] (m ³ /s)
31-Dec-21	357.492	41.5	42.9
1-Jan-22	357.516	41.2	44.3
2-Jan-22	357.520	43.9	45.4
3-Jan-22	357.500	42.5	42.8
4-Jan-22	357.468	40.0	42.8
5-Jan-22	357.429	38.6	41.1
6-Jan-22	357.436	37.9	40.4

Provisional Data